



The Decorative Solution



Taking Decor to a new Dimension

About House Martin



The Deco

House Martin was established in 2001 to meet the increased demand for decorative detailing to the external facades of new build housing sector.

Our earliest products were Grp dentils, which are typically installed to the eaves of upmarket homes throughout the U.K.

Now we offer both Exterior and Interior decorative building products equally suited to Developers and Self Build consumers.

Our Exterior designs include Flat Top, Apex and Lean to canopies, barge boards, chimneys, finials, columns, radius guttering, dentils, gallows brackets and window shutters. We are happy to offer bespoke products where necessary.

In addition we are able to offer Interior mouldings, with a vast array of cornice, dado rail, uplighters, architrave, and skirtings. Many of our interior products are available direct to site on a next day basis.

Whatever you choose you can be assured that we will strive to offer First Class products at competitive rates.

online sales and further info

www.house-martin.com



Decorative Solution



• **HMBPSC**
GRP door canopy
400 x 150 x 1400
Flat Top Canopy
(shown with 2x TF01
corbels at extra cost)



• **REG01**
Regency canopy
800 app x 1100 x 2400



• **HMDC01**
GRP door canopy
360 x 300 x 1660



• **REG03**
Regency canopy
300 soffit x 500 x 1800
Single Door Regency
Canopy (with 2 x TF05
available at extra cost)



• **HMDC02**
GRP door canopy
600 x 300 x 1660



• **HMROW2SP**
GRP variable width bay
canopy
800 proj app x 620 +
100mm flash band x
6750mm max length



• **HMDC03**
GRP mono pitch
canopy
780 x 800 x 1500



• **HMBC02**
90° bay canopy
1250 x 300 x 3200



• **MF.DUO.P**
Duo pitch canopy
**750(P) x 820(H) x
1400(W)**
820mm high including
flash band



• **VPF**
Variable porch roof



• **MF.DUO.T**
Duo pitch canopy
**750(P) x 820(H) x
1400(W)**
820mm high including
flash band



• **DC01/WH**
This is a special Window
Header Canopy,
225 projection
x 200 high x 1650 wide
Please note **TF05** Dentils
are available at extra cost.

Exterior Cornice & Gallows Brackets

Our best selling exterior cornice & brackets are listed below. All PU cornice and Gallows Brackets are kept in stock whilst Grp cornice mouldings are made to order. Where shown, Canopy is not included.



• **C.800**
Orac PU cornice
55 x 65 x 2000



• **TH01**
GRP eaves cornice
300 x 300 x 2000
Please note:
image shows TH01 in
a non standard colour
RAL 1015



• **C.810**
Orac PU cornice
50 x 50 x 2000
C810 cornice between
HM11 dentils



• **SC1**
polypropylene cornice
78 x 172 x 1220
Scalloped Tooth



• **C.820**
Orac PU cornice
200 x 165 x 2438



• **HM_S_C**
GRP cornice
200 x 200 x 1600
shown with HM12
dentils between



• **HMLYM**
GRP cornice
120 x 220 x 3200



• **FC01**
Feature corbel
390 x 350 x 80



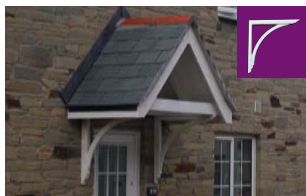
• **BH04**
GRP cornice
200 x 270 x 3000



• **GB03**
Small gallows bracket
580 x 630 x 70
Up to 75kg load bearing
(subject to mfgs guide
lines) gallow bracket in
white wood grain finish



• **HMBAT**
GRP cornice
300 x 450 x 2000
Parapet Style Cornice



• **GB04**
Large gallows bracket
745 x 770 x 50
Up to 75kg load bearing
(subject to mfgs guide
lines) gallows bracket in
white wood grain finish

Taking Decor to a

Dentils

Our range of dentils, corbels and decorative brackets offers the discerning House Builder a wide range of options. If you are looking for a decorative eaves detail our Xterio range offers the following benefits;

- **Products available from stock (48hrs lead time)**
- **Sharp Detailing**
- **Weather Resistant**
- **Secret Fix**
- **Durable Construction**
- **Sizes to suit most soffit projections**
- **Pre-finished White, suits both PVCu & Timber applications**

Or if you require a still wider choice our HM series offers additional advantages;

- **Available in any RAL or BS colour**
- **Plywood footplate for Secret Fix (prior to felt & batten)**
- **Lightweight & Weatherproof**
- **Class 1 fire retardant Gel Coat on all white dentils**
- **Up to 590mm projection**
- **Easily spaced (unlike Grp pre-moulded dentil/fascia options)**
- **Realistic lead-times from existing moulds**
- **New designs to meet architect drawings (usually within 4 weeks).**

In addition our Xterio Gallows Brackets and feature corbel offer further options for the façade of any building. Gallows Bracket product benefits;

- **75kg load bearing capacity per bracket**
- **Pre-finished White in a woodgrain white**
- **No ugly Grp paste/ply infill panels to the inner arch**
- **Available from stock on a next day delivery**
- **Already in use by leading developers nationwide**
- **Impact resistant**
- **Quickly installed**



• **TF01**
GRP dentil
350 x 125 x 70



• **TF02**
GRP dentil
105 x 115 x 75



• **TF03**
GRP dentil
200 x 100 x 78



• **TF04**
GRP dentil
250 x 200 x 75



TF05
Polyurethane Dentil
255 x 135 x 100



TF06
Sub Fascia Dentil Block
175 x 175 x 155



a new Dimension

Chimneys

Our Grp chimneys offer a cost effective solution to meeting modern planning constraints.

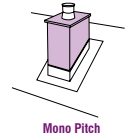
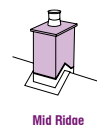
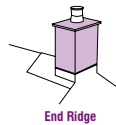
Whether you are considering Traditional Build or Brick Slip alternatives our Grp alternative offers a range of benefits;

- **Reduced Build Cost**
- **Value adding feature**
- **Quick & Easy to install**
- **Lightweight (especially useful when chimneys are on a mono pitch)**
- **Strong & Weatherproof**
- **No need to point brick work**
- **No Health & Safety risks from falling Brick Slips**
- **Realistic finish**

Our standard products will meet the most needs, but we are happy to offer castellated pots, square pots, Slate inverted "V" detailing, a wide range of brick effects, and any RAL or BS colour requirement.

Chimneys can also be offered to meet gas venting requirements with approved gas terminals and flue pipes.

Our standard products can weigh between 25 & 40 kg (depending upon size & configuration), please ensure all chimneys are lifted into place via telescopic fork lift or crane as appropriate.



• **CH01B**
GRP Single Pot Brick Effect Chimney
**865 x 1400 (max)
x 865**



• **Kent Single Pot**
Single Pot Render Effect Chimney
**940 High
x 655 x 655**



• **Chimney / Flue**
Our Grp chimneys may be used to vent Gas Boilers . Check for further information



• **CH01R**
GRP Single Pot Render Effect Chimney
**865 x 1400 (max)
x 865**



• **CH02R**
GRP Twin Pot Render Effect Chimney
**865 x 1400 (max)
x 865**



• **Bespoke Chimneys custom**
Special chimneys can be manufactured where standard sizes are inappropriate



• **CH01SR**
GRP Single Pot Render Slim Chimney
**560 x 2925 (max)
x 560**



• **Norfolk Single Pot**
BrickEffectincluding visible mortar relief
440 x 900 x 552
ultimate Spec Brick Effect Chimney



• **Staffordshire Slate Top**
Slate Top "Cornish" option, standard pots available.
**940 high
x 890 x 655**



• **CH02B**
GRP Twin Pot Brick Effect Chimney
**865 x 1400 (max)
x 865**



• **Staffordshire Twin Pot**
Brick Effect inc. visible mortar line relief: **655 x 940 high x 890**
ultimate spec Brick Effect Chimney



• **Warwick Chimney**
Twin Pot
**940 high
x 890 x 440**

Radius Gutters & Columns

Choose between Doric, Ionic or Corinthian columns. We can offer plain or fluted designs to a variety of sizes, typically with 10 working days. Half columns are available for cloaking existing supports. All our columns are provided in component form, primed and ready for your choice of exterior finish. Each column can be used on exterior or interior applications.



• **KD2**
Slim
Doric Column
2880 x 2505 x 220



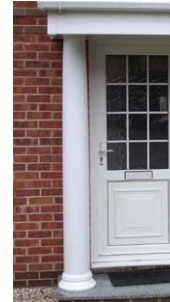
• **KD3**
Wide
Doric Column
2325 x 2225 x 300



• **KD6**
Slim
Doric Column
Fluted
2880 x 2505 x 220



• **KD7**
Wide
Doric Column
Fluted
2325 x 2225 x 305



• **KD11**
Low Threshold
Doric Column
2120 x 2120 x 220



KD11



KD2



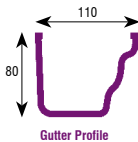
KD3

Photo Courtesy of: www.freehouse-company.com

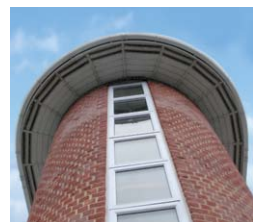
Radius Gutters

Choose our radius gutters to provide aesthetically pleasing rainwater drainage. Using our NIA/RAD grp gutter system your building will have an exclusive traditional appearance without the snags associated with multiple pvc union applications.

We can offer this high capacity system with flow rates of up to 2.20 litres per second on a level run. Each length of guttering is hand made to your exact radius or template.



Typical applications include Oast Houses, Sun Rooms & faux Napoleonic towers. Standard colours are Black, White & Brown, with the option of RAL or BS Colour matching if required.



www.house-martin.com



House Martin

Telephone: 01626 833800

Fax: 01626 836844

enquiries@house-martin.com

Head Office:

30 Teignbridge Business Centre, Cavalier Road
Heathfield, Newton Abbot, Devon TQ12 6TZ

South West • London • South East