



**Equipment used:** Power drill, Power driver, Spirit level, tape measure and a pencil.

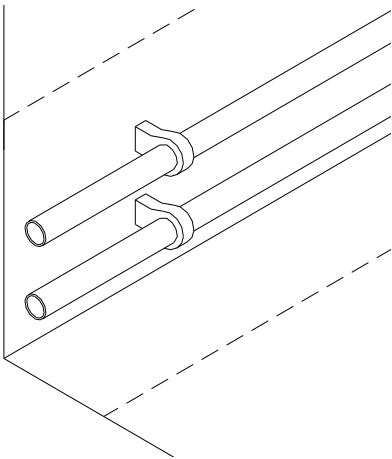
**Materials required:** 2 no. softwood battens (25 x 38mm) to suit length of casing, fixings (suitable for application), wood screws, caps and washers.

These materials are not supplied as standard, however they can be purchased from Pendock on request.

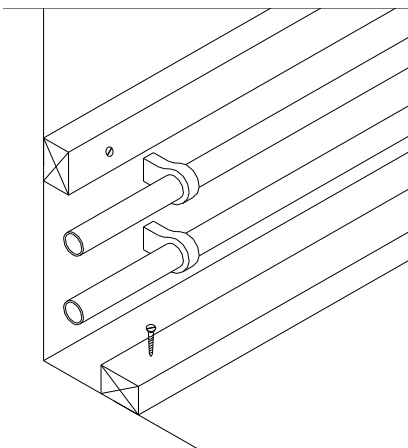
For further enquiries regarding installation, please call our technical team on 01952 580590.

### Installation Instructions

1, Firstly measure and mark the internal dimensions of the profile on the wall and floor, ensuring these are level.

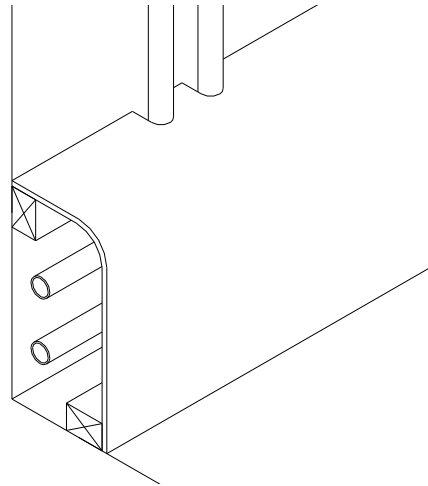


2, Align the first batten to the marking out on the floor and fix in position using suitable fixings for the floor.

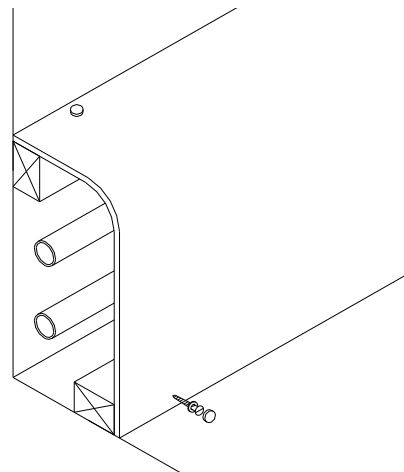


3, Align the second batten to the marking out on the wall and fix in position using suitable fixings for the wall.

5, Present the profile to the fixed battens. Where appropriate mark and cut out to fit around other pipe work or obstacles.



6, Insert screw through plastic washer, with lipped edge facing screw head, and screw fix through the profile into the battens. Fix 10mm in from edge, 50mm from each end and at approximately 600mm centres. Take care not to over tighten as this may split the washers. Push plastic caps onto washers.



### NOTE:

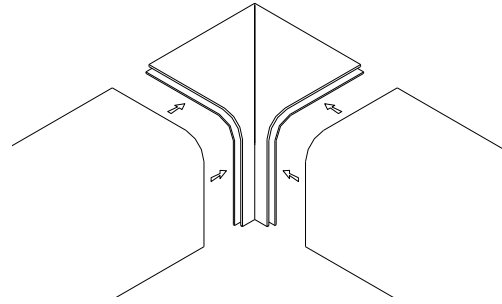
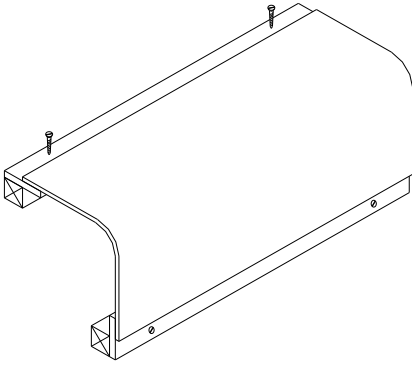
Where profiles are to be installed in situations where they may come in to contact with increased levels of moisture (not regular direct contact with water) a suitable mastic sealant is required to seal all unfinished edges.

### Alternative fixing methods

Where subsequent access is not required profiles can be fixed using adhesive or panel pins. Casing can also be installed in vertical applications, simply fix to walls instead of floor and wall.

### Edge Shadow Gaps

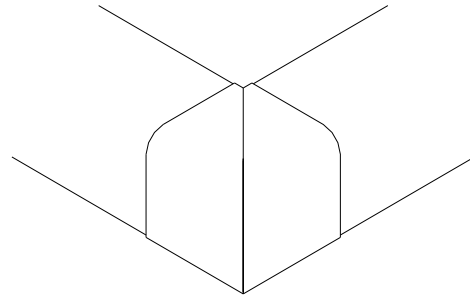
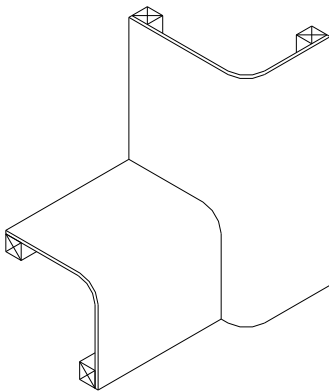
Profiles supplied with edge shadow gaps are fixed through the shadow gaps using countersunk screws (of matching colour).



**External Corners**, Install using 'push-fit' design.

**Intersections**

Profiles of different sizes should be used where they intersect.



**Note:** Alternatively corners can be site mitred and simply butt jointed.

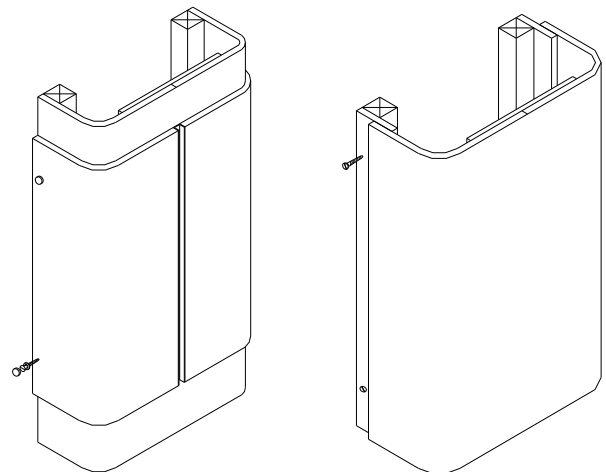
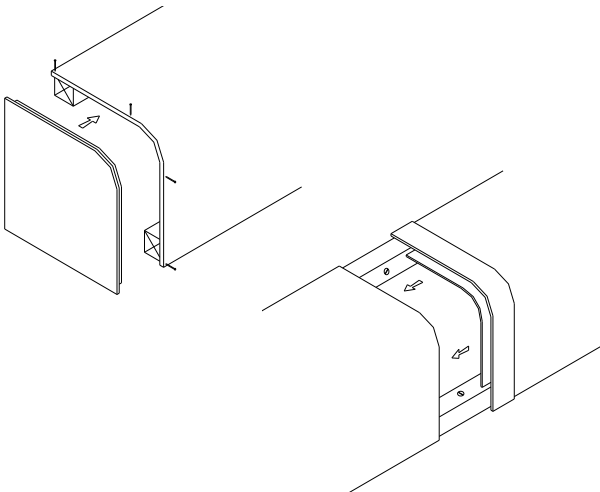
**CH INSTALLATION**

CH profiles are installed in the same way as MX profiles, the only difference being that the battens are both fixed to the wall. The examples below show inner collars to the top and base of the casing and the use of edge shadow gaps.

**Accessories**

Stop ends should be installed using panel pins, adhesive or flexible sealant.

Runs of casing can be simply butt jointed together or joined using 'push-fit' butt joint covers.



Larger channels may require additional battens at assembly joints, fixed back to the structure or wall.

**Internal Corners**, Install using 'push-fit' design.